

# Panafax®





When it comes to office equipment, nothing is more important than consistent, reliable performance. Just because a task is simple doesn't mean that it is always easy to do. Automatic document feeding is one of the most essential features of a fax machine, and when it doesn't work the way you want it to, it can lead to a lot of frustration.

That's where the UF-8000 comes in. From a one-page fax, up to large, multi-page transmissions, the UF-8000 is designed to handle all of your business needs. Supported by a fast 0.7-second Quick Scan, the UF-8000's large capacity 100-page Auto Document Feeder easily manages large or small jobs. It also improves your document handling by minimizing the risk of double-feeding, pickup failures and skewing.

The UF-8000's versatile one-touch Auto-Dialer and QWERTY keyboard allows users to quickly program in and search for stored numbers and email addresses. You can even program the Auto-Dialer by using the standard Address Book Editor Software, which allows you to import a list from a PC file. Now, with 80 one-touch stations at your fingertips, faxing your documents is as easy as a push of a button!

Best of all, the UF-8000 is built to last and designed to grow along with you as your business needs expand. Upgrades such as Network Scanning, Scan-to-Email/PC and LAN PC Faxing, ensure that the UF-8000 is the superior choice for your business needs today and tomorrow.



**Panafax®**  
UF-8000

**Built to Last.**  
**Designed to Grow.**





# more versatile



## Standard Duplex and 2-in-1 / 4-in-1 Printing

The UF-8000 standard automatic duplex printing capabilities allows users to print on both sides of the paper. For added cost savings, double-sided printing can also be used with the 2-in-1 / 4-in-1 printing. This feature can greatly reduce your paper expenses and save on filing space.

## Mailbox Print/Secure Mailbox Print\*\*\*

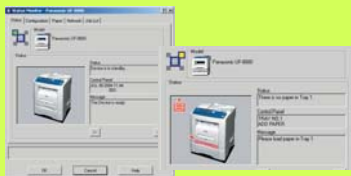
Mailbox Print ensures that your printouts don't get mixed up with someone else's by storing your printouts in a specified mailbox. Secure Mailbox Print executes the Mailbox Print jobs only when the correct user password is entered.



## Easy Print Driver Installation, User-Friendly Graphical Interface, and Status Monitoring



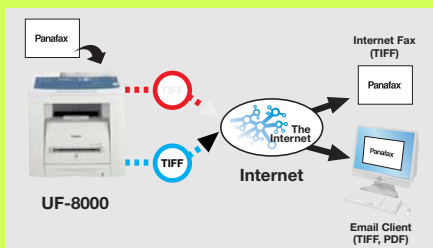
Printer Driver



Network Status Monitor

## Internet Fax and Scan-to-Email/PC/FTP Server

With the optional Internet Fax/Email/Network Scanner Module, the UF-8000 can send documents to an ITU-T T.37 Internet Fax machine<sup>®</sup>, an Email Address, a networked PC or a FTP Server as a PDF or TIFF file.



## Extended Reliability

### Maintenance Support

The Check & Call function automatically reports low toner status and certain mechanical problems to a service center while the Remote Diagnostic System enables expert technicians to quickly troubleshoot and provide solutions via a telephone line or the Internet.



\* Internet Fax/Email/Network Scanner Module is required.

\*\* CSV/Comma-Delimited text file

\*\*\* Optional SD Memory Card is required.

## Features

- Auto Dialer
  - Quick Name Search: up to 280 stations (up to 1000 stations with optional SD memory card)
  - One-touch: up to 80 stations
  - Abbreviated: up to 200 stations
  - Digit of Telephone number (up to 36 digits)
- Auto Dial Prefix Insertion
- Program Keys (up to 80 programs)
- Multi-Tasking Operation
- Directory Search Dialing
- Directory Sheet Print
- Intelligent Redial
- Chain Dialing
- Quick Memory Transmission
- Multi-station Transmission (up to 330 stations)
- Deferred Transmission
- Deferred Multi-station Transmission
- Duplex Transmission
- Receive to Memory
- Substitute Reception
- Number of memory job files (Max. 50 files)
- Fax Forward
- Polling /Multi-station Polling
- Deferred Polling / Deferred Multi-station Polling
- Memory Polling Transmission (1 file)
- ITU-T Sub-address Transmission
- 256-Level Halftone

- Automatic/Fixed Reduction
- Collation Stack
- Verification Stamp
- Communication Journal with image data
- Header/Total Page Print
- Transmission Journal with view mode
- Fax Access Code (Fax Lock)
- PIN Code Access
- Multiple Copy with Sorting (up to 99)
- Duplex Copy
- Zoom/Reduction Copy
- Sort Copy
- Bypass Copy
- Energy Saver
- Remote Diagnostic
- Check & Call Function
- LAN PC Fax software (Panafax® Desktop)
- Document Manager
- Document Viewer with Annotation
- Network Address Book Editor
- Network Configuration Editor
- Network Status Monitor
- Dynamic Host Confirmation Protocol (DHCP) client ready
- Lightweight Directory Access Protocol (LDAP) compatible
- Simple Mail Transfer Protocol (SMTP) Authentication

## Options

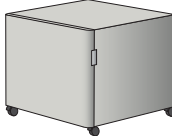
### Memory

#### SD Memory Card (Maximum 512MB)

\*Contact your local dealer



**Handset Kit**  
UE-403171



**Stand**  
DA1D190



**550-sheet  
2nd Paper Feed Module**  
DA-DS188

**Accounting Software** DA-WA10

\*Requires additional SD memory

**Expansion Board** DA-EM600F

**Printer Controller Module**  
UE-404091

**Internet Fax/Email/  
Network Scanner Module**  
UE-404090

**G3 Communication  
Port Kit (2nd G3 Fax)**  
UE-407026

### Consumables



**Toner cartridge**  
UG-5530

## UF-8000 Specifications

### General Specifications

|                          |   |
|--------------------------|---|
| Type                     | Desktop   |
| Power Requirement        | AC 120V, 50/60 Hz   |
| Power Consumption        | Max: Approximately 1000 W<br>Power saver mode: 12 W<br>Sleep mode: 7 W    |
| Dimensions (W x D x H)*1 | 17.7" x 16.5" x 17.6" (450 x 418 x 448 mm) (Excluding optional equipment) |
| Weight*1                 | Approx. 48.5 lb (Approx. 22 kg) (Excluding optional equipment)            |

### Fax Specifications

|                            |   |
|----------------------------|---|
| Compatibility              | ITU-T Group 3, ECM  |
| Modem Speed                | 33.6 kbps - 2.4 kbps with automatic fallback  |
| Coding Scheme              | MH/MR/MMR/JBIG  |
| Transmission Speed*2       | Approximately 2.7 seconds / page (Letter)   |
| Number of Memory Job Files | 50  |
| Document Size              | Max: 8.5" x 78.7" (216 mm x 2000 mm <sup>3</sup> ) with operator's assistance<br>Min: 5.5" x 5.5" (140 mm x 140 mm)   |
| Effective Scanning Width   | 8.34" (212mm)   |
| Automatic Document Feeder  | 100 pages (20 lb, 75 g/m <sup>3</sup> )   |
| Scanning Speed*4           | Approximately 0.7 seconds/page (Letter, 203 dpi x 98 lpi)   |
| Scanning Resolution        | Standard: 203 dots/inch x 98 lines/inch (8 dots/mm x 3.85 lines/mm)<br>Fine: 203 dots/inch x 196 lines/inch (8 dots/mm x 7.7 lines/mm)<br>Super Fine: 406 dots/inch x 391 lines/inch (16 dots/mm x 15.4 lines/mm)<br>600 dpi: 600 dots/inch x 600 dots/inch |
| Recording Method           | Monochrome laser printing on plain paper  |
| Recording Paper Size       | Letter/Legal  |
| Effective Recording Width  | 8.15" (207mm)   |
| Paper Feed                 | Standard Tray: 250 sheets paper tray unit x 1 + 1-sheet bypass<br>Maximum 800 sheets with option  |
| Image Memory Capacity*5    | Standard: 12MB (720 pages)<br>Maximum: 512MB (12,750 pages)   |
| Number of Auto Dialers     | Standard: 280 Max: 1,000 with optional SD Memory Card (32MB to 512MB)   |

### Printer Specifications

|                             |   |
|-----------------------------|---|
| Network Printer Interface   | Ethernet 10Base-T/100Base-TX  |
| Local Printer Interface     | USB 1.1   |
| Printing Speed*6            | Up to 19 ppm  |
| Paper Size                  | Letter/Legal/Invoice <sup>7</sup> /Envelope (#9, #10) <sup>7</sup>                                  |
| Printing Resolution         | 1200 dpi equivalent <sup>8</sup> x 600 dpi  |
| Printer Memory              | 32MB  |
| Printer Language            | Standard: Panasonic Printing System for Windows® (GDI)<br>Option: PCL 5e Emulation, PCL 6 Emulation |
| Compatible Operating System | Windows® XP/2000/Server 2003/98/Me, Windows NT® 4.0   |

### Network Scanner Specifications

|                           |   |
|---------------------------|---|
| Network Scanner Interface | Ethernet 10Base-T/100Base-TX                      |
| Scanning Resolution       | 600 x 600 dpi, 300 x 300 dpi, 150 x 150 dpi       |
| Scanning Speed*4          | Approximately 1.1 seconds (Letter, 150 x 150 dpi) |
| Data Format               | TIFF, PDF   |

### Scan-to-Email / Internet Fax Specifications

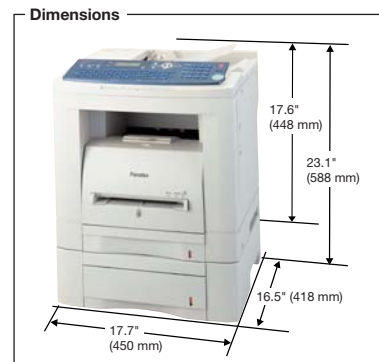
|                        |  |
|------------------------|--|
| Compatibility          | IETF RFC 2305, ITU-T T.37                        |
| Communication Protocol | TCP/IP, SMTP, POP3, MIME, DHCP<br>LDAP, SNMP/MIB |
| Network Connectivity   | Ethernet 10Base-T/100Base-TX<br>(IEEE802.3)      |
| Data Format*9          | TIFF-FX (Profile S/F/J), PDF                     |

### Notes

- \*1 Dimensions and weight are approximate.
- \*2 Transmission time applies to memory transmission of text data using only ITU-T Image No.1 between the same models at maximum modem speed. Transmission time may vary in actual usage. Usually public telephone lines can only support communication speeds of 28.8 Kbps or lower. Via PBX, transmission speed may fall back to a lower speed.
- \*3 Standard/Fine mode
- \*4 Scanning speed applies to the feeding process from the top to the end of a single page test chart. The time for the feeding process does not include the time that it takes for the top edge of the page to reach the scanning point and page ejection. Time for entire storing process is not applied.
- \*5 Based on ITU-T Image No.1 scanned in Standard mode.
- \*6 Speeds are contingent upon applications, machine configuration, and status. Individual speeds may vary.
- \*7 Bypass only
- \*8 With optional Printer Controller Module
- \*9 Internet Fax only supports TIFF-FX format.

Design and specifications are subject to change without notice. Not all options may be available at the time of notification.

Microsoft® Windows® and Windows NT® are registered trademarks of Microsoft Corporation.  
PCL is a registered trademark of Hewlett-Packard Company and/or its subsidiaries.  
All other brand or product names are the property of their respective holders.



# Panasonic®

Panasonic Digital Document Company  
Unit of Matsushita Electric Corporation of America  
Two Panasonic Way, Secaucus, NJ 07094  
For a local dealer, please call 1-800-742-8086  
panasonic.com/panafax



As an Energy Star® partner, Panasonic has determined that this product meets the Energy Star® guidelines for energy efficiency.

### ISO 9001 Quality Management System

Our business processes which produce document, information and network products, from manufacturing to marketing, conform to ISO9001 Quality Management Systems standard. Design, development, manufacture, installation, repair and maintenance of document, information and network products, their associated devices and consumables in addition, the plants outside Japan have acquired ISO 9001 certification.



001

FAX-UF8000-BR