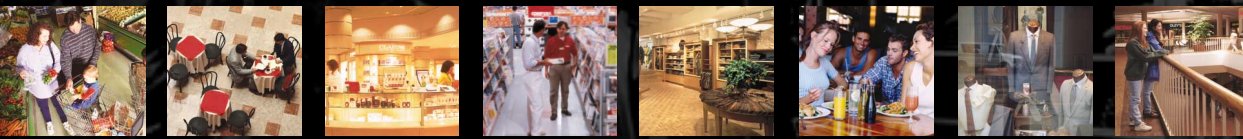


FreeSpace® Model 16 Loudspeaker



BOSE

FreeSpace® Model 16 Loudspeaker



Easy to integrate. Easy to install. Easy to own.

Specifically engineered for commercial applications of all kinds and sizes, the sleek new Model 16 incorporates a 16-watt, 2¼" full-range driver for smooth, accurate reproduction of both speech and music. Versatile new mounting options open up a whole new range of applications, while value pricing and simplified installation make it easier than ever for customers to move up to Bose® premium sound.

Bose quality for nearly any speech or music application.

The new FreeSpace Model 16 passive loudspeaker will become one of the most popular speakers for commercial applications of any size. Its versatility makes it an ideal solution for background or foreground applications in a wide range of business environments from retail and restaurant operations to convenience stores, malls, office buildings and airports.

Fast, easy installation anywhere you'd put a ceiling speaker.

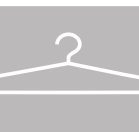
A proprietary enclosure and flexible new mounting accessories permit flush or pendant mounting in tile, hard or open ceilings, so you can install the Model 16 speaker anywhere you'd put a ceiling speaker. When flush-mounted in a standard 8" hole, the Model 16 speaker's integrated mounting arms simplify installation, making it an excellent choice for retrofits, updates and upgrades.

Increased versatility. Reduced installation time and costs.

The Model 16 speaker requires no equalization card, further reducing the complexity of installation. It can be used alone, providing bass response down to 80Hz, or for additional bass energy, it can be combined with the new FreeSpace 3 Series II Acoustimass® module, which delivers bass down to 50Hz for added impact in all types of music.

Engineered for demanding business applications.

The FreeSpace Model 16 speaker is plenum rated when used with the plenum cover accessory, and it meets U.S. fire/evacuation codes. A European version, the Model 16EU, meets European fire and evacuation codes. Engineered for demanding business applications, the Model 16 is backed by a transferable 5-year limited warranty.

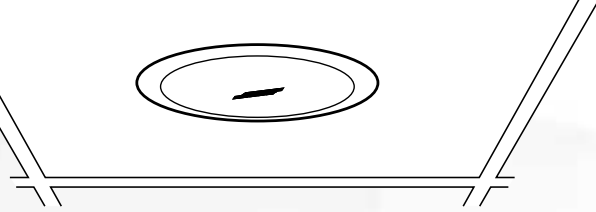


Quick-scan benefits of the FreeSpace Model 16 loudspeaker.

Proprietary 16-watt, 2¼" full-range passive driver provides premium Bose sound for music and speech.

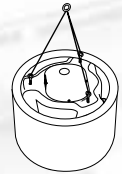
Versatile installation for flush and pendant mounting in tile, hard, or open ceilings.

Plenum rated when used with the plenum cover accessory. Meets fire and evacuation codes.



Mounting versatility.

The new flush-mount Model 16 gives you the versatility to create a quality sound system for any ceiling configuration. It can be flush- or pendant-mounted in any tile, hard or open ceiling.



Combine with FreeSpace® 3 Series II Acoustimass® module for bass down to 50 Hz.

Integrated mounting arms simplify installation.

A smart choice for retrofits and upgrades, this passive speaker fits a standard 8" hole and can be retrofitted for 8" to 12" holes.

Attractive pricing makes it easier than ever for customers to move up to Bose.

FreeSpace® Model 16 Loudspeaker

Specifications

Dimensions:

- 9.4" (23.9 cm) outer flange diameter
- 8.0" (20.3 cm) ceiling hole
- 6.25" (15.9 cm) height to top of housing

Weight:

- 4 lb. (1.81 kg)

Driver complement:

- One 2¼" full-range driver

Impedance:

- 70/100V or 8 ohms

Power handling capacity:

- 16w

Frequency response:

- 80Hz to 16kHz ± 3 dB

Sensitivity:

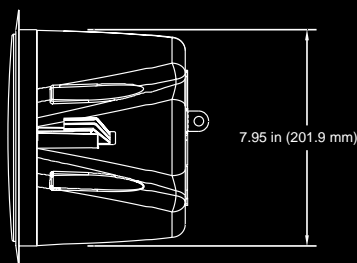
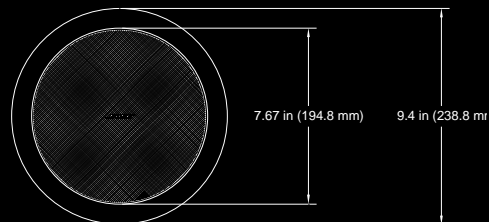
- 84dB SPL @1w, 1 m

Maximum output:

- 96dB SPL ± 3 dB

Color:

- Black or white.
- Paintable with Krylon® paint to match any décor



Accessories

Rough-in pan for easy installation in hard ceilings.

Pendant mounting kit for easy installation in open ceilings.

Tile bridge for easy installation in tile ceilings.

Retrofit ceiling kit for simplified mounting of a Model 16 speaker in a hole 8" to 12" in diameter.

8/32 junction box for use with rough-in pan for pre-wiring and meeting local building codes.

Plenum Cover for installation in air-handling spaces.

For more information
call 877.428.2673

or contact Bose Corporation,
Professional Systems,
The Mountain, Framingham,
MA 01701.

<http://pro.bose.com>